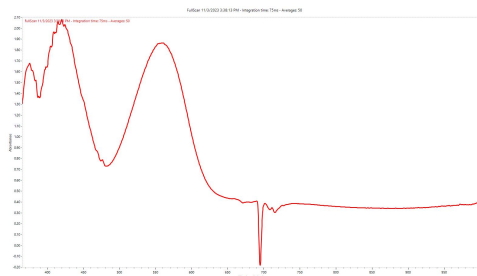


PICTURE OF ITEM(S)



Picture is not actual size. The color of the item(s) and the color of the picture may be different.

UV-VIS-NIR SPECTRUM



ALGT COLORED STONE IDENTIFICATION REPORT

IDENTIFICATION

Species ..... Natural Corundum  
Variety ..... Ruby

DESCRIPTION

Shape & Cutting Style ..... Oval, Mixed Cut  
Measurements ..... 9.28 x 6.54 x 3.04 mm  
Carat Weight ..... 2.07 Carat  
Color ..... Intense Pinkish Purplish Red  
Transparency ..... Translucent

COMMENTS

No indication of heating.

Significant amount of clarity enhancement in fissures. Clarity enhancement has become a common practice in trade for many gemstones. This enhancement is reversible at any time.

MAIN PROPERTIES OF RUBY

Chemical Composition .....  $Al_2O_3$   
Crystal System ..... Trigonal  
Mohs Hardness ..... 9.0  
Specific Gravity ..... 3.97 - 4.10  $g/cm^3$   
Optical Character ..... Uniaxial-  
Refractive Index ..... 1.757 - 1.780  
Birefringence ..... 0.008 - 0.010

Please visit our website  
for more information:  
[www.algtlabs.com](http://www.algtlabs.com)



Reportcheck QR

